



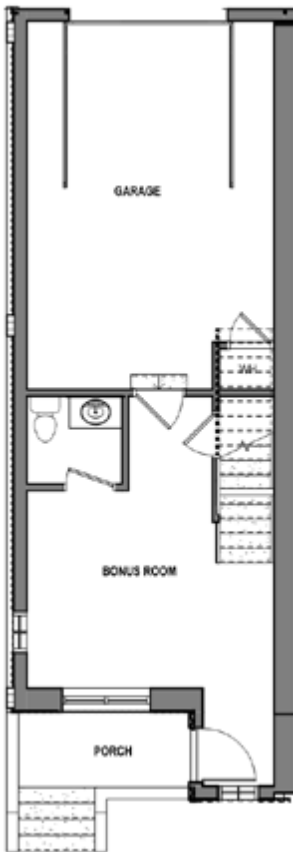
Floor Plan A

1,761 Square Feet Total

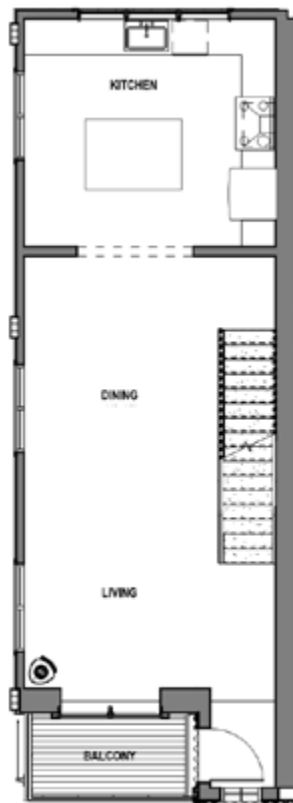
2 bedrooms | 2.5 baths | 1.5-car garage | Rooftop deck w/snowmelt

*65, 69, & 73 Ski Idlewild Rd | Starting at \$1.299M**

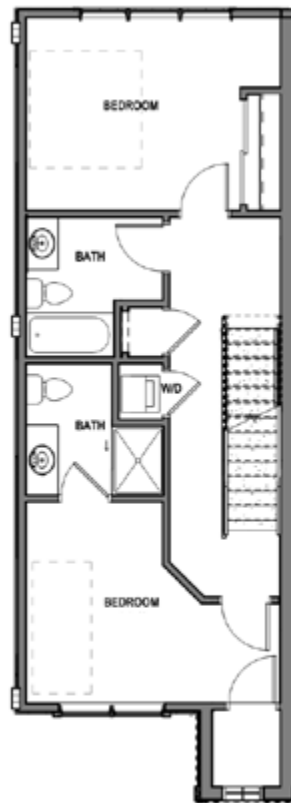
1ST FLOOR



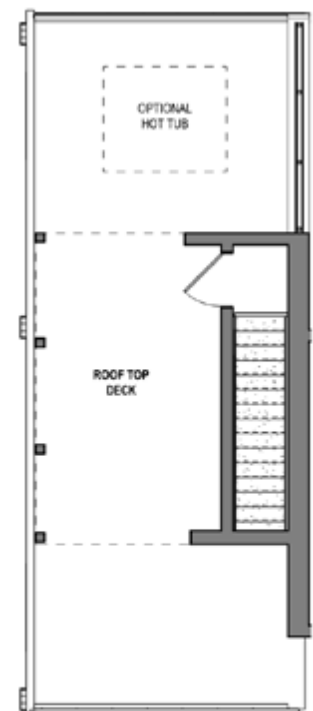
2ND FLOOR



3RD FLOOR



ROOFTOP DECK



** Full price listings can be seen on the site plan page*



All elements, designs, plans, renderings, finishes, and any other information presented above are for informational purposes only, are not guaranteed, and are subject to change without prior notice. Maps, floor plans, and models are not to scale.

Please contact David Taylor at dtaylor@roamwinterpark.com or call (970) 363-7562 to discuss the purchase of your new duplex home at The Row Phase II. roamwinterpark.com/the-row-phase-ii